



SPARE PARTS EXPLODED VIEW
GAS WALL BOILERS

Models

GENUS 23 M

GENUS 27 M

GENUS 23 R

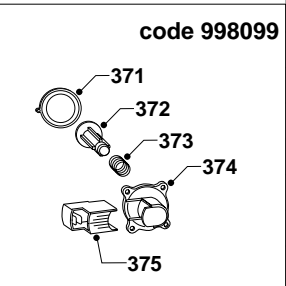
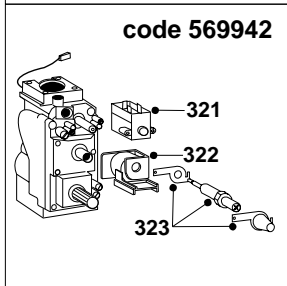
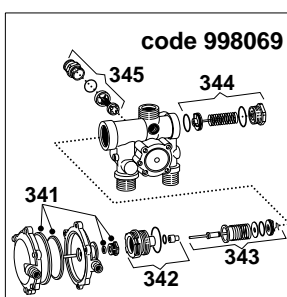
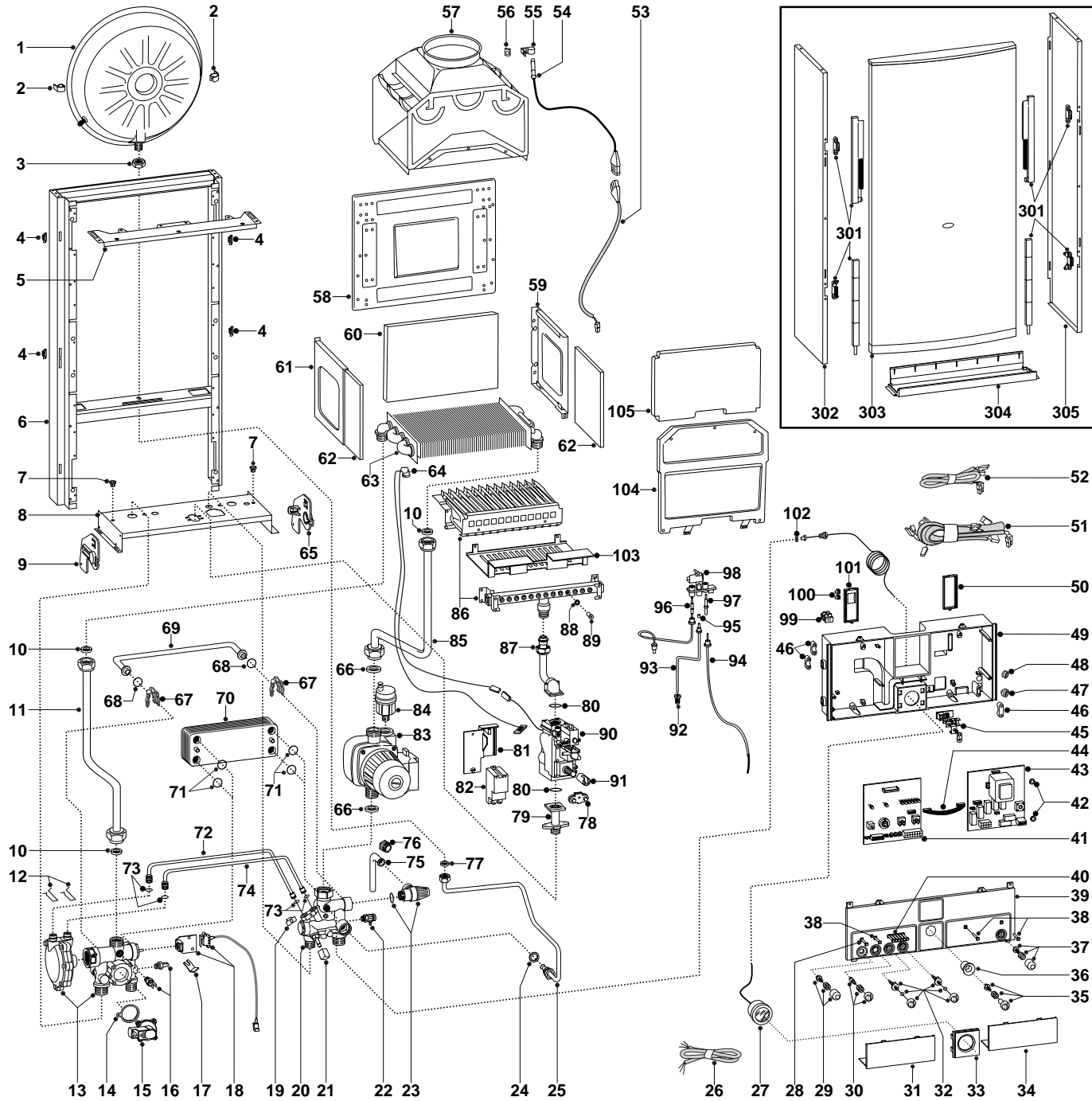
GENUS 27 R

Edition 2 of 15 March 2000
Revision 3 of 26 March 2001



Replaces Edition 2 - Revision 2

ER200121B009902.031



MODELS	CHARACTERISTICS	SERIAL NO: VALIDITY	REF.
GENUS 23 M	METHANE	0004000523	A
GENUS 23 M	LPG	0004000524	B
GENUS 27 M	METHANE	0004000525	C
GENUS 27 M	LPG	0004000526	D
GENUS 23 R	METHANE	0004000527	E
GENUS 23 R	LPG	0004000528	F
GENUS 27 R	METHANE	0004000529	G
GENUS 27 R	LPG	0004000520	H

ER200121B009902 031

PART.	CODE	DESCRIPTION	REF.	NOTE
1	573294	Expansion vessel		
2	999679	Expansion vessel insert		21
3	573244	3/8" lock nut		
4	574302	Casing support bracket (Plastic)		
5	572984	Casing support bracket		
6	-----	Frame		11
7	570772	Cable holder		
8	-----	Hydraulic support		11
9	998042	Hydraulic support bracket (L/H)		
10	573520	Gasket 3/4"		
11	997201	Pipe (main exchanger - 3 way group)	ABEF	
11	998092	Main exchanger/3-way-group pipe	CDGH	
12	573809	Spring (water venturi)	ABCD	
13	573293	3-way-pressure gauge valve group	EFGH	
13	998069	3-way pressure gauge valve group	ABCD	
14	571547	Diaphragm (main flow switch)		
15	998099	Main circuit flow switch		
16	998458	Temperature probe		25
17	573824	Bracket (m/flow microswitch)		
18	998921	Microswitch	ABCD	
19	571838	Pipe fixing clip	ABCD	
20	573318	Return group	EFGH	
20	998071	Return group	ABCD	
21	571559	Filling cock knob		
22	573727	Drain valve		
23	573172	Safety valve (1/2" 3 bar)		
24	573528	Gasket 1/2"		
25	573311	Pipe (expansion vessel)		
26	998012	Cable (power supply)		
27	571649	Pressure gauge		
28	572659	Flue L.E.D. cover (white)		
29	573300	Push button kit		
30	573302	Summer/Winter selector kit		
31	571629	L.H. inspection cover		
32	573301	Regulation knob kit		
32	573328	Front panel cover	EFGH	
33	572948	Cover (pressure gauge)		
34	571628	Inspection Cover (R.H).		
35	573382	Gas valve push-button kit		
36	573380	Gas valve push-button plastic ring with symbols		
37	573303	On/off push button kit		
38	571550	Power Indicator L.E.D. lens		
39	995387	Control panel cover	EFGH	26
39	999897	Control panel cover	ABCD	24
40	571551	Temperature L.E.D. lens bank		
41	953002	E C-M PCB		
42	569711	Nylon bush (10mm)		
43	952952	Printed circuit board (EI A-M/P)		
44	952610	Cable (P.C.B.)		
45	-----	Terminal board		11
46	571562	Cable clamp		
47	569458	Cable holders silicone D.2		
48	573534	Cable holder D.75		
49	-----	Control panel		11
50	569713	Cable holder cover (R.H.)		
51	573235	High voltage wiring		
52	998082	Low voltage wiring	ABCD	
52	998488	Low voltage wiring	EFGH	
53	573186	Cable (flue control probe)		
54	995345	Flue control probe		27
55	573349	Spring (Flue Control Probe)		
56	570717	Spring (fastening)		
57	573983	Flue hood	ABEF	
57	573984	Flue hood	CDGH	
58	-----	Combustion chamber back panel		11

ER200121B009902.031

PART.	CODE	DESCRIPTION	REF.	NOTE
59	573242	Panel (R/H - combustion chamber)		
60	998130	Insulation panel (rear)	CDGH	
60	998132	Insulation panel (rear)	ABEF	
61	573243	Panel (L/H - combustion chamber)		
62	998128	Insulation panel (side)		
63	998138	Main exchanger	ABEF	
63	998139	Main exchanger	CDGH	
64	571159	Cable (Ecosplit + SIT gas valve thermostat)		
65	998041	Hydraulic support bracket (R/H)		
66	569387	Gasket 1"		
67	573808	Spring (by-pass pipe)	EFGH	
67	998064	Spring (by-pass pipe)	ABCD	
68	571449	O-ring	EFGH	
68	998077	O-ring gasket	ABCD	
69	573219	By-pass pipe	EFGH	
69	998065	By-pass pipe	ABCD	
70	571646	Secondary exchanger (p-type 23kW)	AB	
70	573295	Secondary exchanger (p-type 27kW)	CD	
71	573825	O-Ring (secondary exchanger)	ABCD	
72	573086	Pipe (main flow switch - positive signal)	ABCD	
73	571807	O-Ring (20-18)	ABCD	
74	573087	Pipe (main flow switch - negative signal)	ABCD	
75	573176	Pipe (safety valve outlet)		
76	998567	Nut (pipe - safety valve)		
77	573521	Gasket 3/8"		
78	569993	Microswitch (gas valve)		
79	573376	Gas inlet pipe		
80	565048	O-ring gasket (gas valve)		
81	-----	Igniter support		
82	573023	Spark generator		
83	570487	Oversize circulator with deaerator	CDGH	
83	997008	Standard circulator with deaerator	ABEF	
84	564254	Auto air vent		
85	572908	Pipe (main exchanger - pump)	ABEF	
85	572910	Pipe (main exchanger - pump)	CDGH	
86	572271	Burner 13 ramp (natural gas)	AE	
86	572277	Burner 13 ramp (LPG)	BF	
86	572343	Burner 15 ramp (natural gas)	CG	
86	572372	Burner 15 ramp (LPG)	DH	
87	573375	Pipe (gas valve/burner)		
88	572138	Burner jet washer		
89	570248	Burner jet (NG 1.25)	ACEG	
89	570251	Burner jet (LPG 0.72)	BDFH	
90	569942	Gas valve (SIT 825 NOVA)		
91	573377	Extension (gas valve)		
92	569543	Union (SIT valve - gas/pilot)		
93	573229	Pilot pipe		
94	569558	Cable (ignition electrode)		
95	573652	Burner jet (NG 0.27 pilot)	ACEG	
95	573654	Burner jet (NG 0.22 pilot)	BDFH	
96	564961	Thermocouple		
97	570475	Ignition electrode		
98	570514	Pilot burner		
99	571787	Terminal board (two pole)		
100	569720	Blind grommet		
101	569714	Cable holder cover (L.H.)		
102	569390	Gasket 1/4"		
103	999411	Protection screen		22
104	572647	Combustion chamber panel (front)	ABEF	
104	572648	Panel (front - combustion chamber)	CDGH	
105	998129	Insulation panel (front)	CDGH	
105	998131	Insulation panel (front)	ABEF	
301	571993	Front panel runner kit		
302	573014	Case panel (L.H. side)		

PART.	CODE	DESCRIPTION	REF.	NOTE
303	999572	Case panel (front)		23
304	997818	Case door insert		
305	573013	Case panel (R.H. side)		
321	573739	Operator (secondary - SIT valve)		
322	573740	Modureg coil (SIT 24V gas valve)		
323	573745	Gas modulator cartridge		
341	571446	D.H.W. diaphragm valve	ABCD	
342	998013	Actuator bush (C.H.)	ABCD	
343	571447	3-Way spring kit	ABCD	
344	571442	D.H.W. pressure switch kit	ABCD	
345	998490	Central heating by-pass kit	ABCD	
371	571547	Diaphragm (main flow switch)		
372	571772	Magnet (main flow switch)		
373	571771	Spring (main flow switch)		
374	571770	Top cap (main flow switch)		
375	998172	Microswitch (main flow switch)		
381	569281	Burner jet 1.25mm full kit (NG)		12
382	569282	Burner jet 0.72 full kit (LPG)		12

NOTE	DESCRIPTION
11	Not supplied as a spare part
12	Not illustrated
21	Replaces code 999228 - from serial number: 2320019200001 - production improvement
22	Replaces code 999113 - from serial number: 2320004000001 - production improvement
23	Replaces code 997225 - from serial number: 2320011100001 - production improvement
24	Replaces code 998752 - from serial number: 2320024900001 - production improvement
25	Replaces code 569236 - from serial number: 2320027300001 - production improvement
26	Replaces code 998503 - from serial number: 2320105600001 - production improvement
27	Replaces code 573016 - from serial number: 2320105600001 - production improvement