

SPARE PARTS EXPLODED VIEW
GAS WALL BOILERS

Models

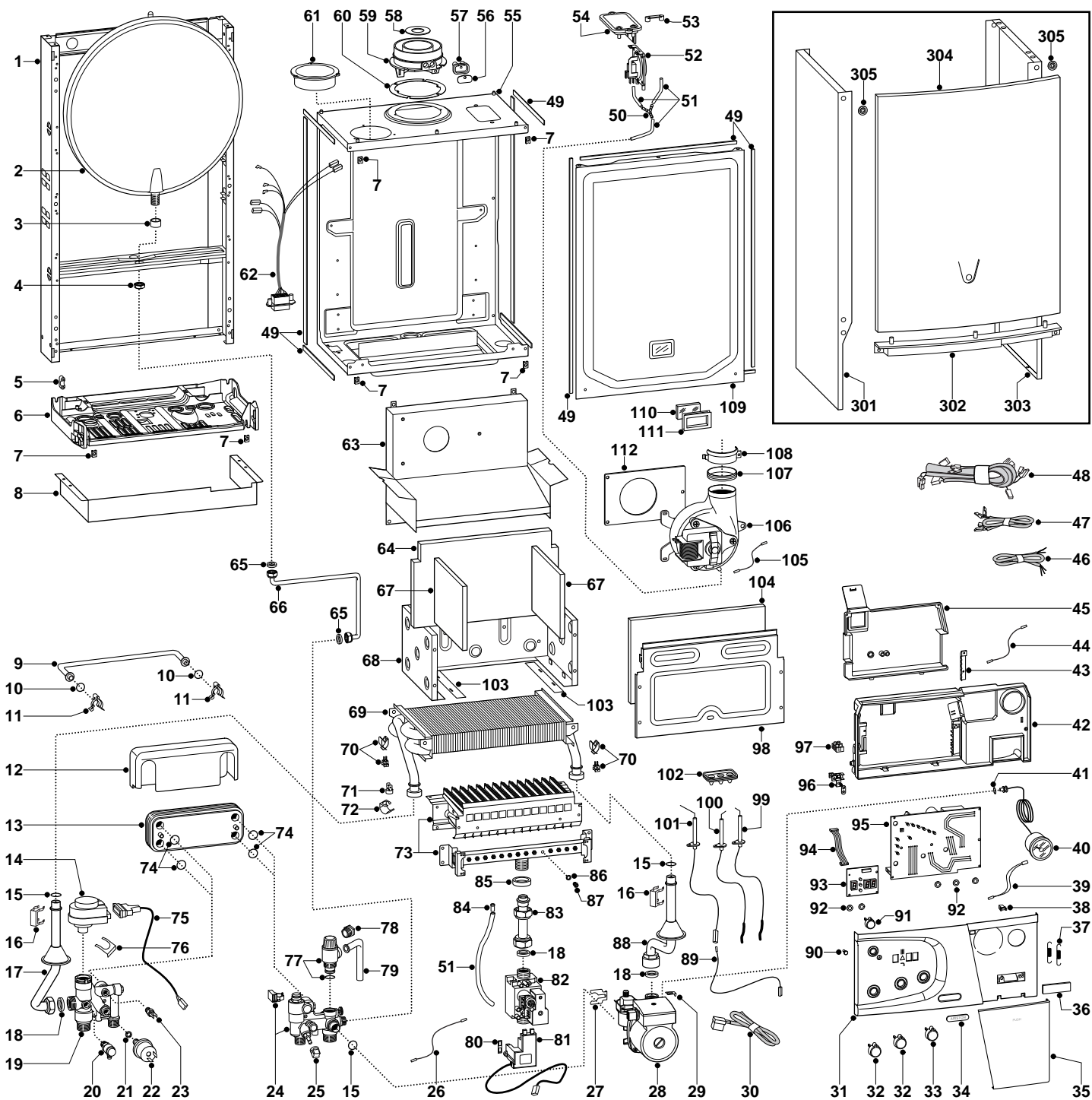
MICROGENUS PLUS 24 MFFI

MICROGENUS PLUS 28 MFFI

MICROGENUS PLUS 31 MFFI

Edition 2 of 2 February 2004





MODEL	CODE	SERIAL NO. VALIDITY	REF.
MICROGENUS PLUS 24 MFFI (IT) MET	537073	2320403300001	A
MICROGENUS PLUS 24 MFFI (IT) GPL	537074	2320403300001	B
MICROGENUS PLUS 28 MFFI (IT) MET	537077	2320403300001	C
MICROGENUS PLUS 28 MFFI (IT) GPL	537078	2320403300001	D
MICROGENUS PLUS 31 MFFI (IT) MET	537081	2320403300001	E
MICROGENUS PLUS 31 MFFI (IT) GPL	537082	2320403300001	F

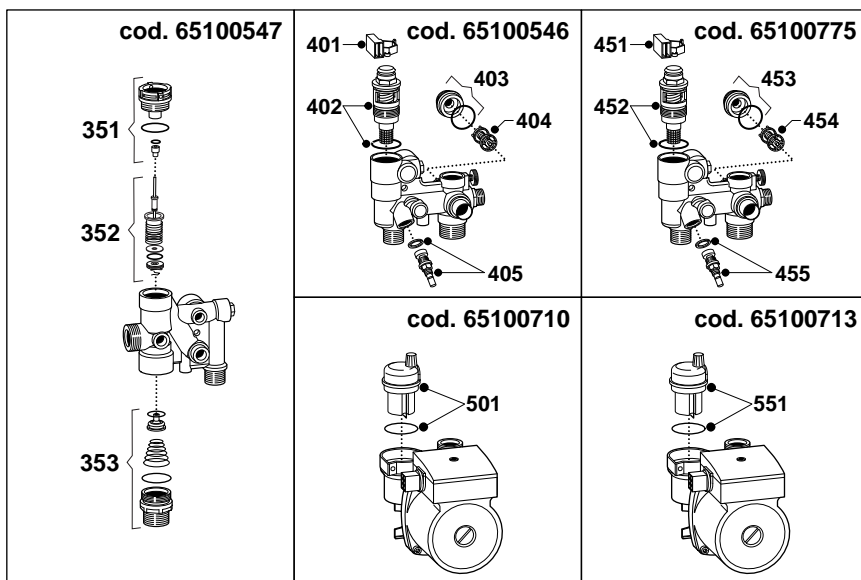
ER2004210036802001

PART.	CODE	DESCRIPTION	REF.	NOTE
1	-----	Frame		11
2	998616	Expansion vessel		
3	998776	Bush (expansion vessel)		
4	998581	3/8" lock nut		
5	571562	Cable clamp		
6	-----	Hydraulic group support		11
7	570717	Spring (fastening) (5 pcs)		
8	65100712	Grankase (connectors cover white)		
9	65100684	By-pass pipe		
10	998077	O-ring gasket (20 pcs)		
11	998064	Spring (by-pass pipe) (10 pcs)		
12	65100706	Cover insulation (secondary exchanger)		
13	998483	Secondary exchanger (p-type 30Kw)		
14	997147	Motor (3-Way valve)		
15	998424	O-ring (C=4 D=17,04) (10 pcs)		
16	61010609	Fixing spring (exchanger pipe)		
17	65100682	Delivery pipe		
18	573520	Gasket 3/4" (25 pcs)		
19	65100547	3-way-pressure gauge valve group		
20	573727	Drain valve		
21	569390	Gasket 1/4" (25 pcs)		
22	995903	Low water pressure switch		
23	998458	Temperature probe (D.H.W.)		
24	65100546	Return group with by-pass	AB	
24	65100775	Return group with by-pass	CDEF	
25	571559	Filling cock knob		
26	65100704	Earth cable (valve)		
27	65100679	Clips		
28	65100710	Pump (2-speed)	AB	
28	65100713	Pump (2-speed)	CDEF	
29	65100680	Clips		
30	65100703	Cable (sealed chamber)		
31	65100728	Control panel		
32	65100687	Knob (D.W.H./C.H.)		
33	65100690	Knob (On-Off)		
34	-----	Adhesive plate		11
35	65100686	Control panel cover		
36	-----	Name badge		11
37	65100678	Fixing spring (panel)		
38	65100676	Push (case door) (5 pcs)		
39	65100677	Safety wiring		
40	65100695	Pressure gauge		
41	998517	Gasket (20 pcs)		
42	-----	Control panel		11
43	-----	Cables clamp		11
44	65100705	Cable (earth)		
45	65100685	Control panel cover		
46	65100699	Cable (power supply)		
47	65100698	Low voltage wiring		
48	65100696	Cable (fan power supply)		
49	65100879	Seal (combustion chamber - 10x6)		
50	573327	"Y" piece (air pressure)		
51	573576	Compensation tube		
52	65100716	Air pressure switch	CDEF	
52	998484	Air pressure switch	AB	
53	573329	Pressure intake cover		
54	997203	Support plate (air pressure switch)		
55	-----	Sealed chamber		11
56	998565	Cover (flue test point)		
57	998636	Gasket (flue test point - 5 pcs)		
58	998087	Restrictor (flue-exhaust manifold-D=42)		
58	998113	D.14 membrane		
59	999561	Flue (exhaust manifold / header)		
60	998637	Gasket (flue collar - 5 pcs)		
61	998595	Plug (air intake)		
62	65100702	Cable (fan/air pressure switch)		

PART.	CODE	DESCRIPTION	REF.	NOTE
63	65101270	Flue hood		
64	65100531	Panel (insulation - rear)		
65	573521	Gasket 3/8" (25 pcs)		
66	65100681	Pipe (expansion vessel)		
67	992199	Panel (insulation - RH-LH Side)		
68	-----	Combustion chamber		11
69	61011136	Heat exchanger	CDEF	
69	61010017	Heat exchanger	AB	
70	990686	Temperature probe + clip (C.H. - T335D)		
71	996065	Thermostat (overheat- 103°C)		
72	65100521	Fixing spring (thermostat) 10 pcs		
73	65100717	Burner	D	
73	65100718	Burner	E	
73	65100714	Burner	C	
73	65100711	Burner	B	
73	65100526	Burner	A	
73	65100720	Burner	F	
74	573825	O-Ring (secondary exchanger - 10 pcs)		
75	65100700	Motor cable		
76	997077	Fixing clip (motor)		
77	997088	Safety valve (3 bar)		
78	998567	Nut (pipe - safety valve)		
79	573176	Pipe (safety valve outlet)		
80	574279	Gasket (spark generator) (5 pcs)		
81	65100701	Spark generator		
82	997089	Gas valve (SIT 845 SIGMA)		
83	65100432	Pipe (gas inlet)		
84	573325	Rivet (20 pcs)		
85	569443	Silicone seal		
86	572138	Burner jet washer (20 pcs)		
87	998433	Burner jet 1.30 full kit (NG - 10 pcs)	C	
87	65100740	Burner jet (LPG 0.80) (10 pcs)	F	
87	998434	Burner jet 0.77 full kit (LPG - 10 pcs)	D	
87	570251	Burner jet (LPG 0.72) (10 pcs)	B	
87	570248	Burner jet (NG 1.25) (10 pcs)	A	
87	65100772	Burner jet (NG 1.35) (10 pcs)	E	
88	65100683	Return pipe		
89	996119	Cable (detection)		
90	65100688	Button (reset)		
91	65100689	Knob		
92	569711	Nylon bush (10mm - 20 pcs)		
93	65100709	P.C.B. (CMP3-display)		
94	65100697	Display cable		
95	65100871	Printed circuit board (CMP3-HS MI/MFFI)		
96	-----	Terminal board		11
97	571787	Terminal board (two pole)		
98	65100524	Front sealed chamber panel		
99	65100693	Electrode (Ignition R.H.)		
100	65100694	Electrode (Ignition L.H.)		
101	65100692	Electrode (Detection)		
102	998147	Ignition electrode cable rubber		
103	-----	Piastrino camera di combustione		11
104	65100530	Panel (insulation - front)		
105	65101271	Earth cable (fan)		
106	65100691	Fan	ABCD	
106	65100719	Fan	EF	
107	65100707	Gasket (fan) (5 pcs)		
108	998566	Fixing clamp (fan)		
109	999151	Panel (front - sealed chamber)		
110	998075	Sight glass		
111	998076	Gasket (sight glass)		
112	999135	Panel (insulation - fan)		
301	65101352	Case panel (L.H. side)		
302	998596	Insert case		
303	65101351	Case panel (R.H. side)		

PART.	CODICE	DESCRIZIONE	RIF.	NOTE
304	998607	Panel (front case)		
305	995305	Washer (20 pcs)		
611	569281	Burner jet 1.25 full kit (NG)	B	12
612	569282	Burner jet 0.72 full kit (LPG)	A	12
613	998716	Natural gas burner jet full kit (15 pcs)	D	12
614	998717	L.P.G. burner jet full kit (15 pcs)	C	12
615	65100739	Burner jet 0.80 full kit (LPG - 15 pcs)	E	12
616	65100771	Burner jet 1.35 full kit (NG - 15 pcs)	F	12

NOTE	DESCRIPTION
11	Not supplied as a spare part
12	Not illustrated



PART.	CODE	DESCRIPTION	REF.	NOTE
351	998974	Heating actuator bush		
352	998975	3-Way spring kit (D.H.W.)		
353	998718	3-Way spring kit (C.H.)		
401	65100540	Flow detection kit with magnet		
402	65100541	3-Way spring kit (D.H.W.)		
403	65100869	Union		
404	998490	Central heating by-pass kit	AB	
405	65100542	Tap kit		
451	65100540	Flow detection kit with magnet		
452	65100541	3-Way spring kit (D.H.W.)		
453	65100869	Union		
454	65100776	Central heating by-pass kit	CDEF	
455	65100542	Tap kit		
501	995367	Air release valve complete with o-ring	AB	
551	995367	Air release valve complete with o-ring	CDEF	