



SPARE PARTS EXPLODED VIEW  
GAS WALL BOILERS

Models

**MICROSYSTEM 21 RI**

---

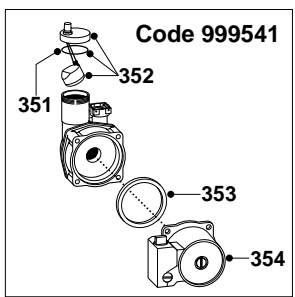
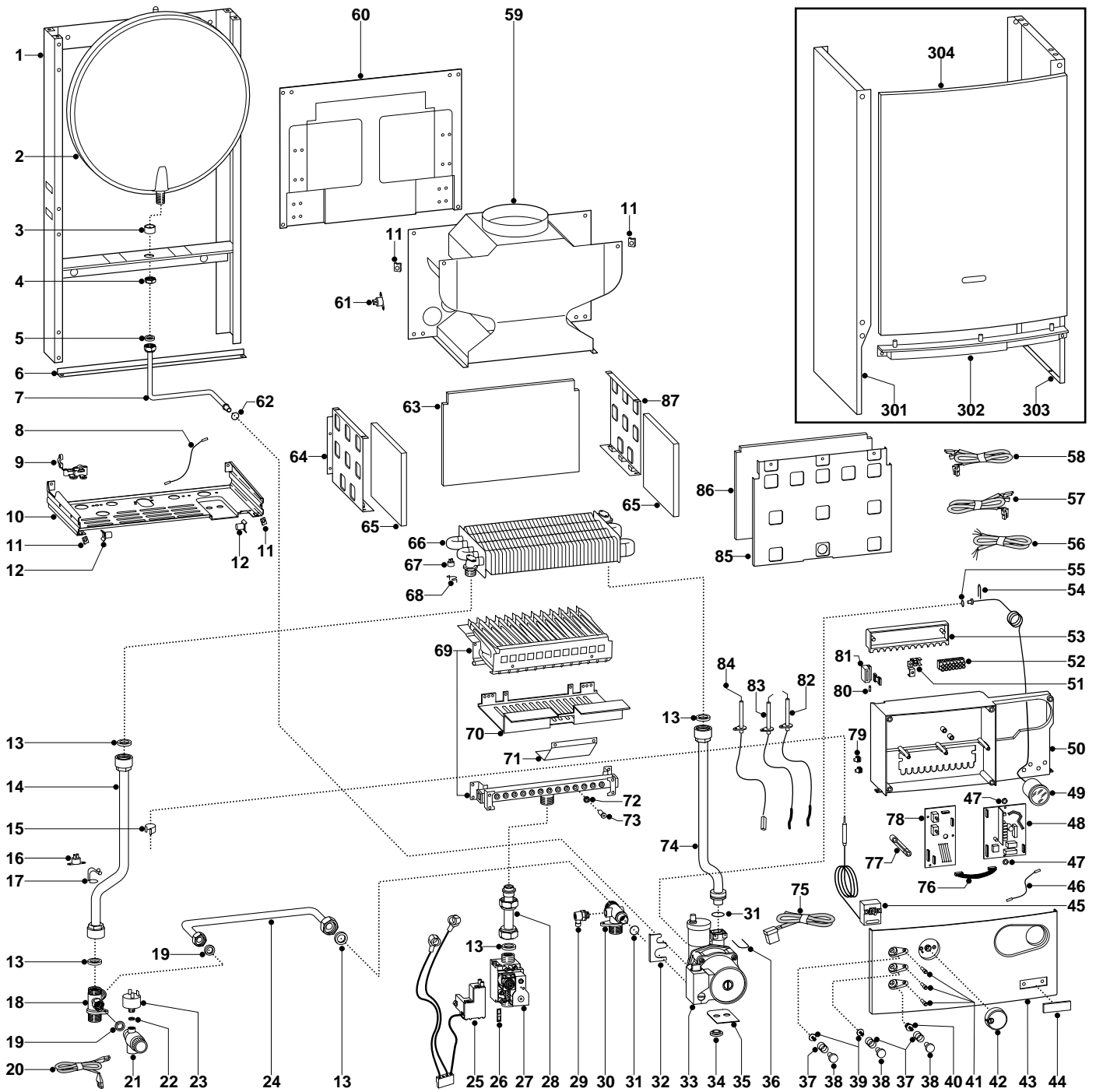
Edition 1 of 1 September 2000

Revision 3 of 7 August 2001



Replaces Edition 1 - Revision 2

ER2001210021901031



MODELS	CHARACTERISTICS	SERIAL NO: VALIDITY	REF.
MICROSYSTEM 21 RI	METHANE	2320021100001	A
MICROSYSTEM 21 RI	LPG	2320021100001	B

ER2001210021901031

PART.	CODE	DESCRIPTION	REF.	NOTE
1	-----	Boiler frame		11
2	998616	Expansion vessel		
3	998776	Bush		
4	998581	3/8" lock nut		
5	573521	Gasket 3/8"		
6	995393	Frame support		26
7	999525	Pipe (expansion vessel)		
8	999547	Earth cable (P.C.B.)		
9	998580	Cable holder		
10	-----	Hydraulic group support		11
11	570717	Spring (fastening)		
12	995492	Pivot		29
13	573520	Gasket 3/4"		
14	999531	Flow pipe		
15	571565	Fixing spring (pressure gauge)		
16	570760	Thermostat (anti-frost)		
17	999557	Fixing spring (anti-frost thermostat)		
18	998612	Flow group		
19	573528	Gasket 1/2"		
20	995407	Cable (low water pressure switch)		27
21	998447	Safety valve (1/4" 3 Bar)		
22	569390	Gasket 1/4"		
23	995903	Low water pressure switch		30
24	999923	By-pass pipe		21
25	995468	Spark Generator		31
26	574279	Gasket		
27	999475	Gas valve		
28	998729	Pipe (gas valve)		
29	998809	Auto air vent		
30	999476	Return group		
31	998424	O-ring		
32	999162	Pump bracket		
33	999541	Pump (THULD 4.32 H9)		
34	999100	Lock washer		
35	995364	Spacer plate (pump)		28
36	997153	U-clip		
37	999603	Spring (push button)		
38	999469	Push button		
39	999442	Spindle (push button)		
40	999444	Reset button insert		
41	997714	L.E.D. (power indicator)		
42	999456	Control knob		
43	999459	Control panel (front)		
44	997824	Name badge (plastic)		
45	999577	Thermostat (regulation)		
46	995323	Cable (P.C.B.-terminal board)		22
47	569711	Nylon bush (10mm)		
48	999498	Printed circuit board (CBM2 AT-MI2X)		
49	999245	Pressure gauge		
50	-----	Control panel		11
51	-----	Terminal board		11
52	-----	Seven pole terminal board		11
53	-----	Control panel cover (rear)		11
54	571548	Clip (main flow switch)		
55	998517	Gasket		
56	995325	Cable (power supply)		23
57	999545	Cable (regulation thermostat)		
58	999988	Cable (gas valve)		24
59	995926	Flue hood		32
60	-----	Panel (combustion chamber rear)		11
61	999539	75-65°C fume thermostat		
62	997182	Gasket		
63	998640	Panel (insulation - rear)		
64	998600	Panel (combustion chamber - L/H side)		
65	998639	Panel (insulation - side)		

<b>PART.</b>	<b>CODE</b>	<b>DESCRIPTION</b>	<b>REF.</b>	<b>NOTE</b>
66	998620	Main exchanger		
67	999538	Overheat thermostat		
68	998583	Fixing spring (overheat thermostat)		
69	995477	Burner 12 ramp (L.P.G.)	B	33
69	998618	Burner 12 ramp (natural gas)	A	
70	999411	Protection screen		
71	999435	Protection screen		
72	572138	Burner jet washer		
73	998433	Burner jet (N.G. 1.30)		A
73	998434	Burner jet (L.P.G. 0.77)		B
74	998898	Pipe (C.H. return)		
75	995906	Cable (pump)		34
76	995324	Cable (P.C.B.)		25
77	999458	Lever (P.C.B.)		
78	999501	Printed circuit board (CT1)		
79	569720	Blind grommet		
80	950030	Fast fuse 2AT		
81	572860	Terminal board (one-pole) + fuse-holder		
82	998623	Electrode (Ignition R.H.)		
83	998622	Electrode (Ignition L.H.)		
84	998624	Detection electrode		
85	998598	Panel (combustion chamber front)		
86	998638	Panel (insulation - front)		
87	998599	Panel (combustion chamber - R.H.side)		
301	998695	Case panel (L.H. side)		
302	998596	Insert case		
303	998694	Case panel (R.H. side)		
304	998509	Panel (front case)		
351	998644	O-ring (A.A.V.)		
352	998643	Auto Air Vent		
353	998738	Gasket (pump head)		
354	999111	Pump head (noiseless)		
361	998716	Burner jet (full kit - N.G.)		12
362	998717	Burner jet (full kit - L.P.G.)		12

<b>NOTE</b>	<b>DESCRIPTION</b>
11	Not supplied as a spare part
12	Not illustrated
21	Replaces code 998590 - from serial number: 2320101600001 - production improvement
22	Replaces code 999544 - from serial number: 2320101600001 - production improvement
23	Replaces code 999549 - from serial number: 2320101600001 - production improvement
24	Replaces code 999543 - from serial number: 2320101700001 - production improvement
25	Replaces code 999546 - from serial number: 2320101600001 - production improvement
26	Replaces code 999594 - from serial number: 2320107400001 - production improvement
27	Replaces code 999552 - from serial number: 2320106400001 - production improvement
28	Replaces code 999602 - from serial number: 2320103200001 - production improvement
29	Replaces code 998569 - from serial number: 2320118000001 - production improvement
30	Replaces code 998627 - from serial number: 2320118000001 - production improvement
31	Replaces code 999550 - from serial number: 2320118000001 - production improvement
32	Replaces code 999667 - from serial number: 2320118000001 - production improvement
33	Replaces code 998669 - from serial number: 2320118000001 - production improvement
34	Replaces code 999580 - from serial number: 2320118000001 - production improvement

ER20012 10021901031