



SPARE PARTS EXPLODED VIEW  
GAS WALL BOILERS

Model

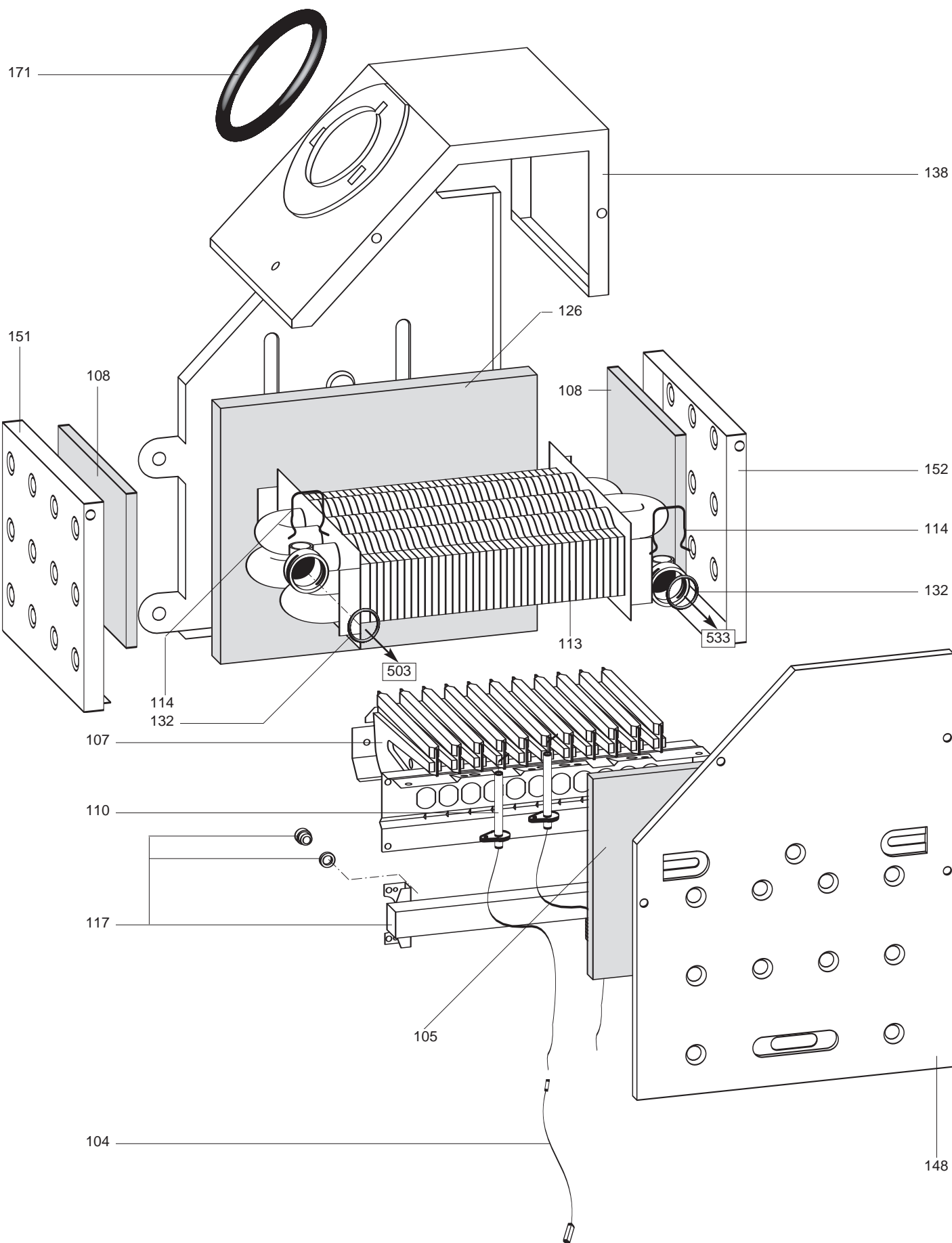
**UNO**

R8216080-01EN - Edition 01 - 15/10/2007

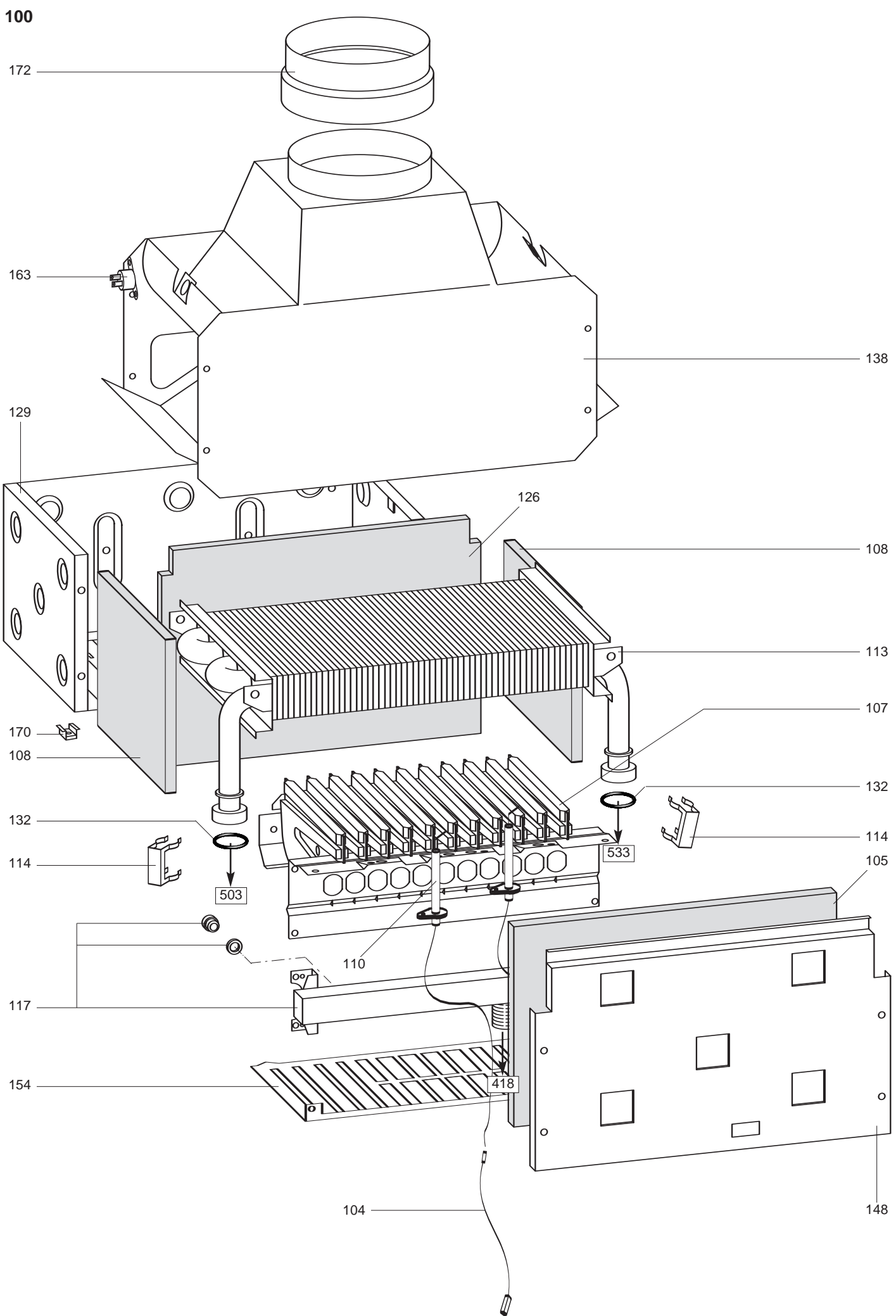
UNO

Domestic Gas Boilers

537255	UNO 24 MFFI (RO) MET	...	...
537256	UNO 24 MFFI (RO) GPL	...	...
537632	UNO 24 MFFI MET (PL, CZ, UCR)	...	...
537633	UNO 24 MFFI GPL (PL, CZ, UCR)	...	...
537636	UNO 24 MFFI MET (TK, RU,BA)	...	...
537637	UNO 24 MFFI GPL (TK, RU)	...	...
537257	UNO 24 MI (RO) MET	...	...
537258	UNO 24 MI (RO) GPL	...	...
537630	UNO 24 MI MET (PL, CZ, UCR)	...	...
537631	UNO 24 MI GPL (PL, CZ, UCR)	...	...
537634	UNO 24 MI MET (TK, RU)	...	...
537635	UNO 24 MI GPL (TK, RU)	...	...
Reference	Ind.	Model type	Begin End

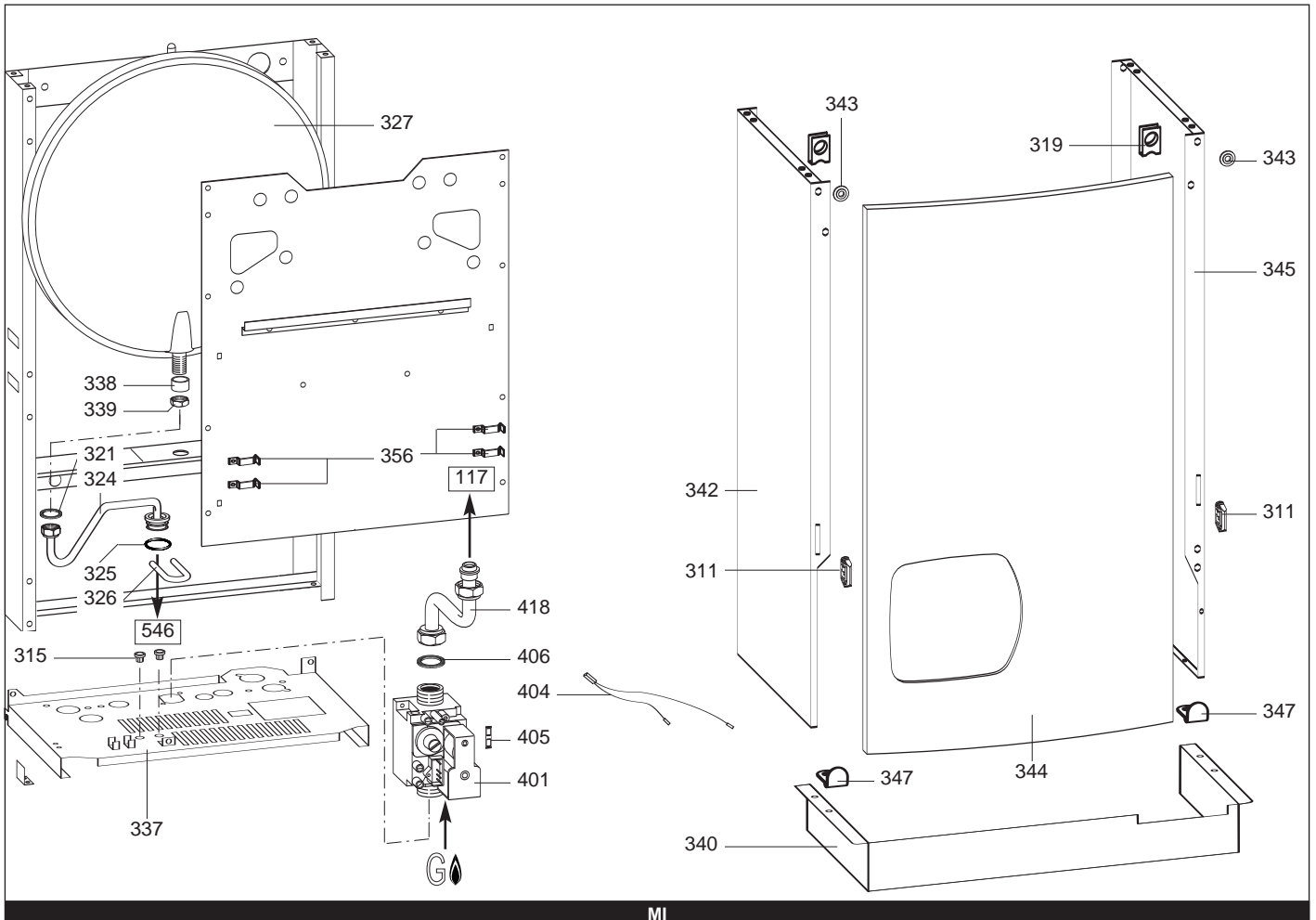
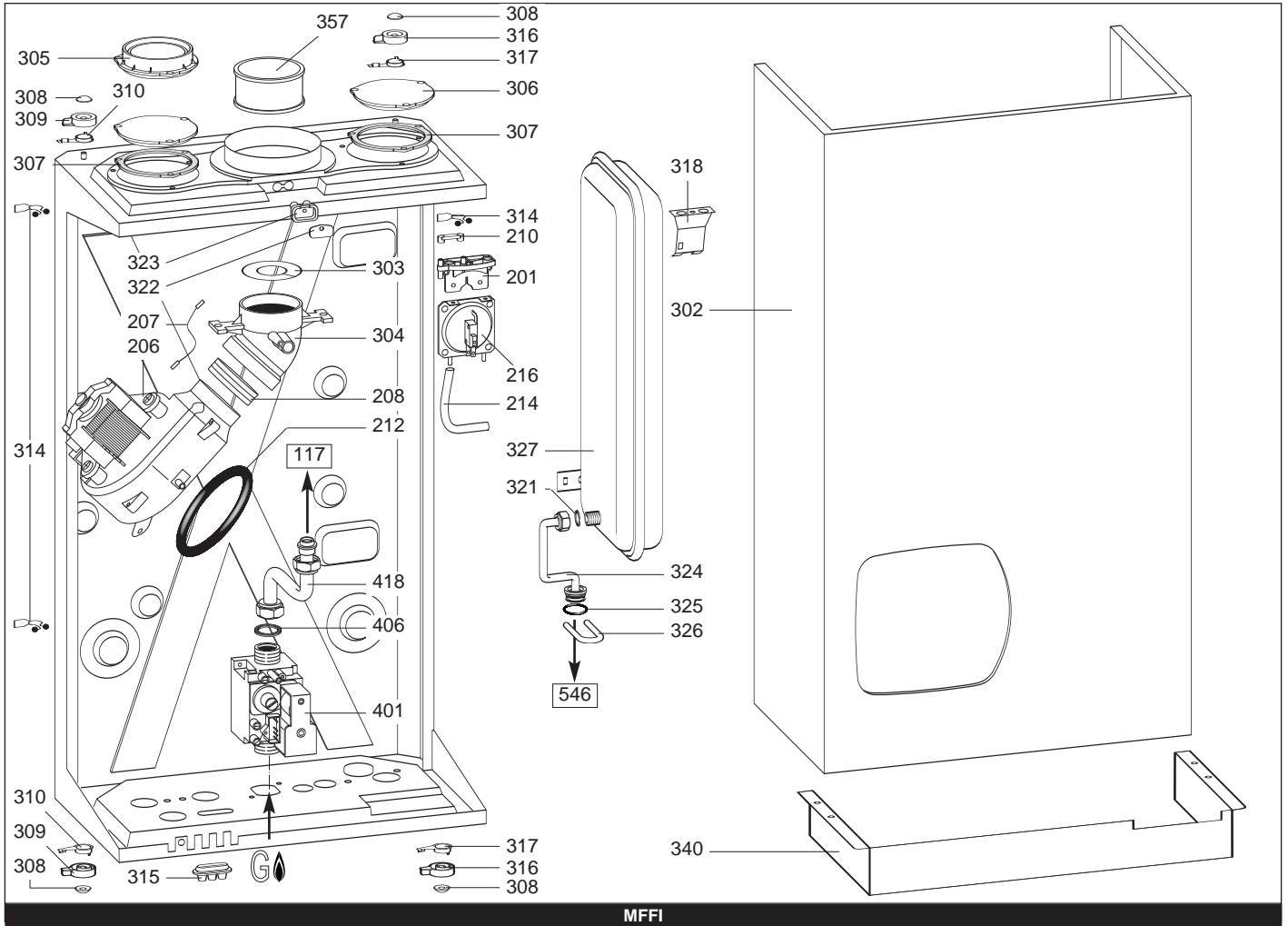








200 - 300 - 400

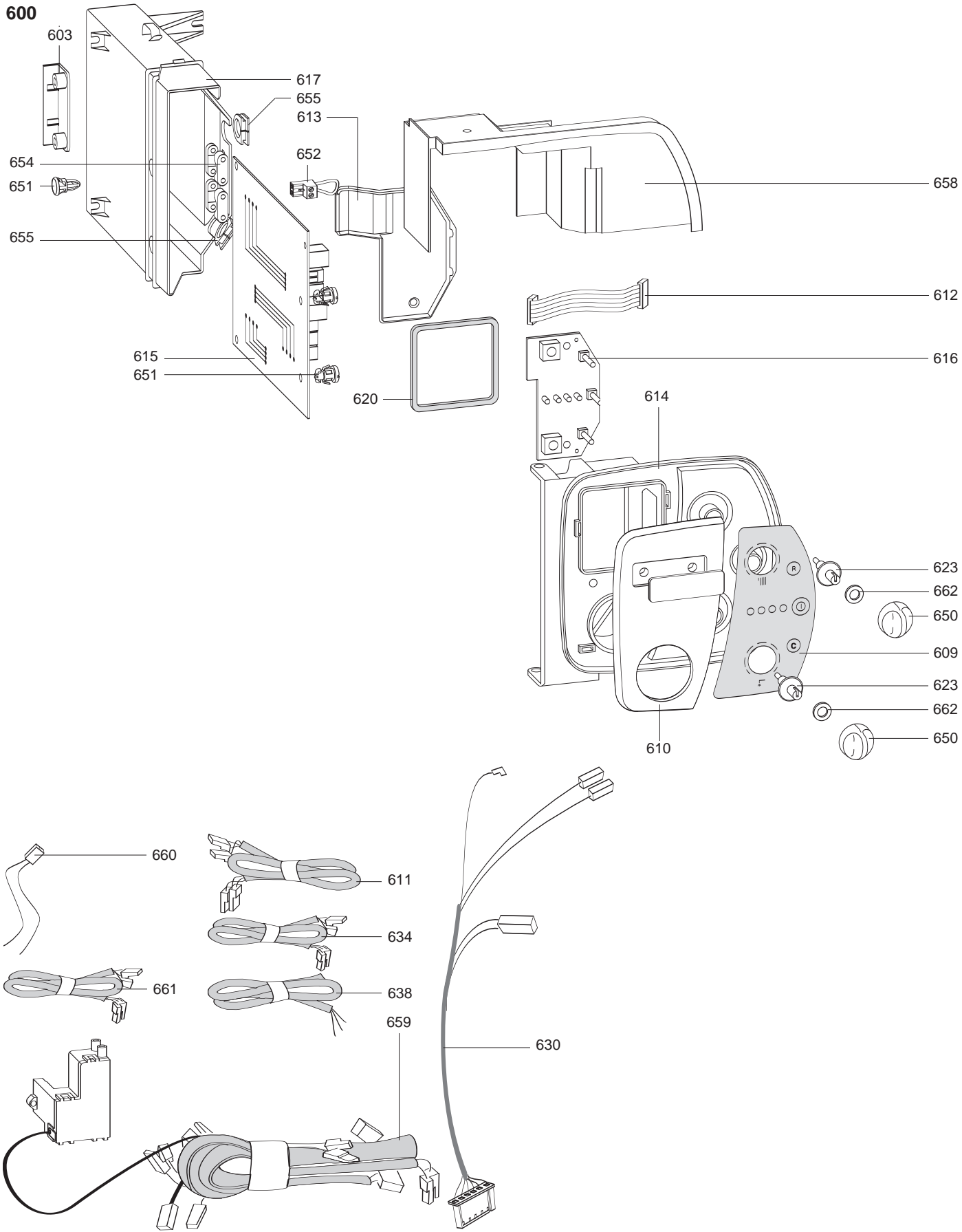


[illegible]





				UNO			
Key N	Description	Manf. Pt. N	Type			Manf. date	
				MFFI	MI	from	to
0500	WATER SECTION ASSY						
0501	MANIFOLD (C.W. INLET)	65100756		●	●		
0502	MOTOR (3-WAY VALVE)	997147		●	●		
0503	PIPE (C.H. FLOW)	990434		●			
	PIPE (C.H. FLOW)	992175			●		
0504	SCREW (M4X102)	990438		●	●		
0505	O-RING	990392		●	●		
0506	U-CLIP	990386		●	●		
0508	O-RING	998424		●	●		
0513	FIXING CLIP (MOTOR)	997077		●	●		
0515	BY-PASS	999473		●	●		
0516	MANIFOLD (C.H. FLOW)	990384		●	●		
0517	MANIFOLD (L.H. - WITHOUT PROBE)	995935		●	●		
0518	O-RING	990387		●	●		
0521	O-RING (C.H. FLOW MANIFOLD)	990383		●	●		
0522	FLANGE (C.H. FLOW)	995936		●	●		
0523	GASKET (DELIVERY GROUP)	990360		●			
0524	LOCK FLANGE	990404		●	●		
0525	3BAR VALVE RUBBER WASHER	990361		●			
0527	O-RING	998517		●	●		
0528	U-CLIP	571548		●	●		
0529	PRESSURE/TEMPERATURE GAUGE	65100757		●	●		
0530	U-CLIP	990385		●	●		
0531	AUTO AIR VENT WITH O-RING	65104683		●	●	10/06	
	AUTO AIR VENT WITH O-RING	995865		●	●		09/06
0532	TAP KIT	996071		●	●		
0533	PIPE (C.H. RETURN)	990485		●			
	PIPE (RETURN)	992176			●		
0535	BY-PASS PIPE	990388		●	●		
0536	U-CLIP	997153		●	●		
0537	SAFETY VALVE	65103222		●	●		
0538	KIT (MOTOR PUMP)	996615		●	●		
0539	D.H.W. FLOW SWITCH	995948		●	●		
0540	FILLING COCK KNOB	571559		●	●		
0541	FIXING BRACKET (RETURN PIPE)	65100038		●	●		
0542	O-RING	990393		●	●		
0543	GASKET (RETOURN GROUP)	990363		●			
0544	FLANGE (C.H. RETURN)	995932		●	●		
0545	PUMP GASKET	996123		●	●		
0546	MANIFOLD (C.H. RETURN)	65104681		●	●		
0547	U-CLIP	65100421		●	●		
0548	CONTACT NTC PROBE	990405		●			
	TEMPERATURE PROBE + CLIP	990686			●		
0549	FIXING PLATE (PROBE)	65101007		●			
0550	MOTOR SUPPORT	65100770		●	●		
0551	O-RING	990488		●	●		
0552	O-RING	990489		●	●		
0554	ASSEMBLED SHUTTER	65105144		●	●		
0555	PLUG (DIVERter VALVE)	990390		●	●		
0556	SPRING (DIVERter VALVE)	65101008		●	●		
0557	SPARK GENERATOR	995902		●			
0560	PROTECTION PLATE	65101313			●		
0570	SERVICE KIT (DIVERter VALVE)	65101288		●	●		
0574	O-RING	998077		●	●		
0575	CLIP	61010609			●		
0576	O-RING	995976		●	●		
0580	FIXING SPRING (PRESSURE GAUGE)	571565		●	●		
0589	SECONDARY EXCHANGER	995945		●	●		
0590	O-RING	573825		●	●		
0593	HEAT EXCHANGER CONNECTOR FORK	990380		●			
	FIXING SPRING (OVERHEAT THERMOSTAT)	998043			●		
0594	GASKET 3/4	573520			●		
						</	



[illegible]

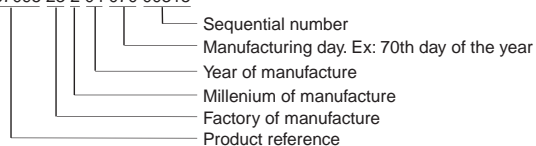
## LIST OF THE ABBREVIATIONS

HW .....	: Hot water.
CW .....	: Cold water.
C .....	: Ceramic resistance (normal heating).
Ca .....	: Ceramic resistance (accelerated heating)
TP .....	: Immersion heater.
1F .....	: With fittings.
2F .....	: Without fittings.
3F .....	: With fittings and another outlet connection.
AMI .....	: With mixing valve.
SMI .....	: Without mixing valve.
PUISS .....	: Power of th appliance.
PN .....	: Appliance with normal pression.
LP .....	: Appliance with low pression.
PV .....	: Appliance with variable power.
PF .....	: Appliance with fixed power..

## IDENTIFICATION PLATE

### SERIAL NUMBER

Ex: 0537095 23 2 04 070 00315



The indications mentionned on the prices, commercial or technical literature and the scheme are written for your guidance and are available at a given time. The CONSTRUCTOR retains the power to modify the presentation, the form, the size, the conception or the material of the products.