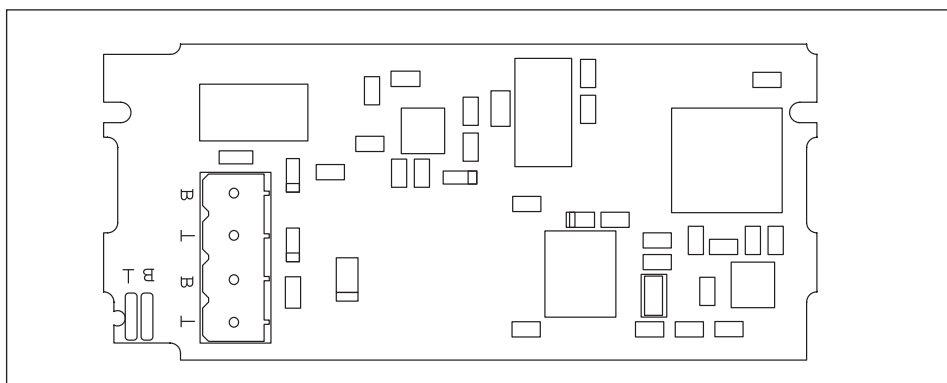


1



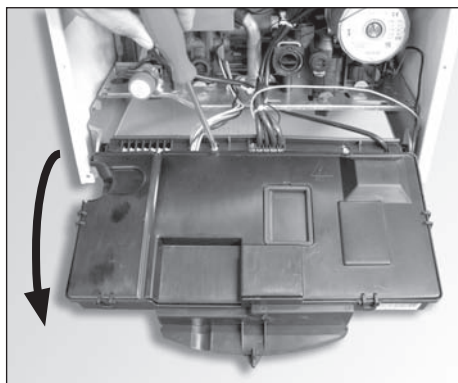
ISTRUZIONE INSTALLAZIONE
INTERFACCIA BUS

INSTRUCTION INSTALLATION
INTERFACE BUS

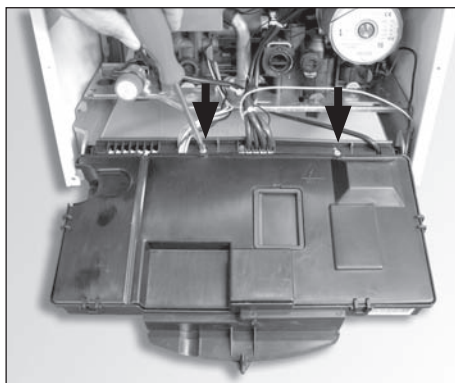
BUS D'INTERFACE INSTALLATION
D'INSTRUCTION

BÚS DE INTERFAZ DE INSTALACIÓN
DE INSTRUCCIÓN

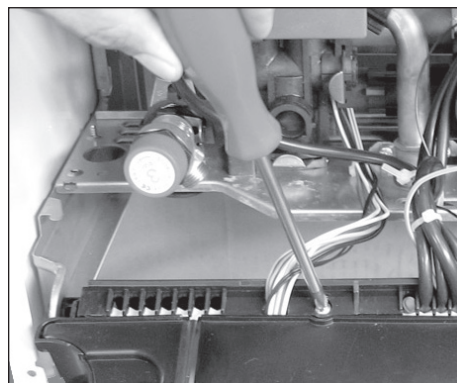
2



3



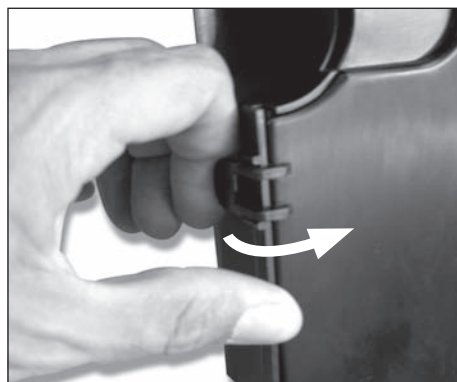
4



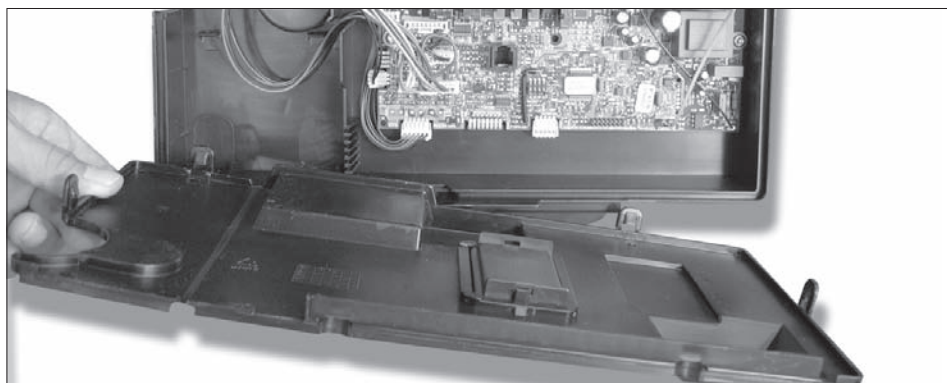
5



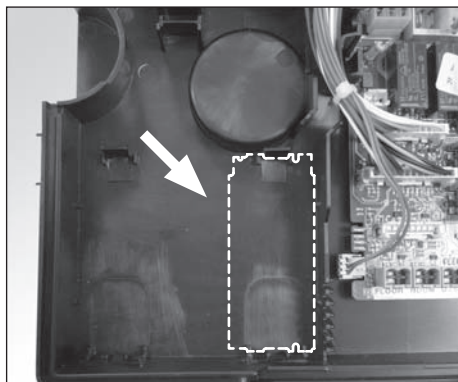
6



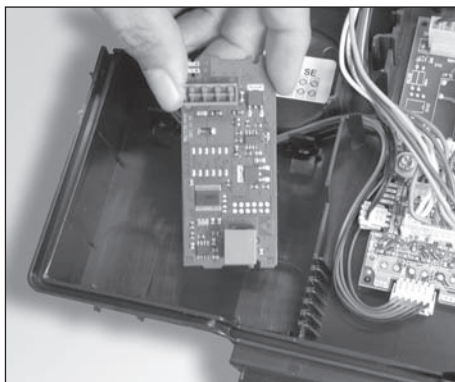
7



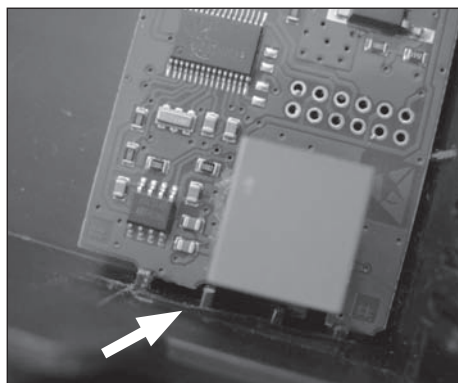
8



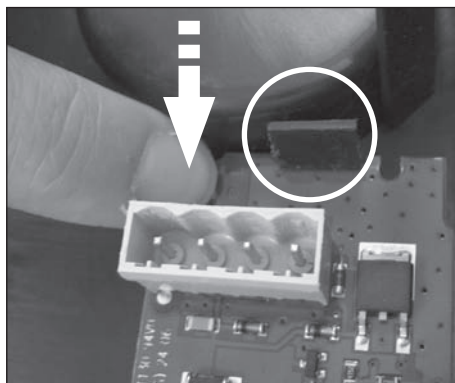
9



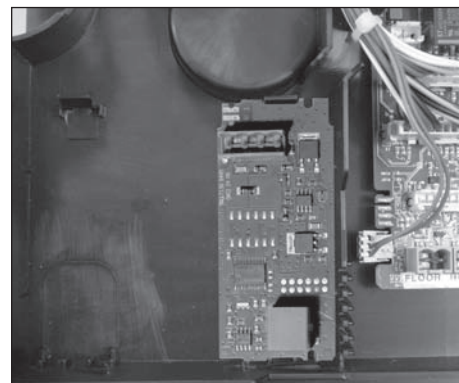
10



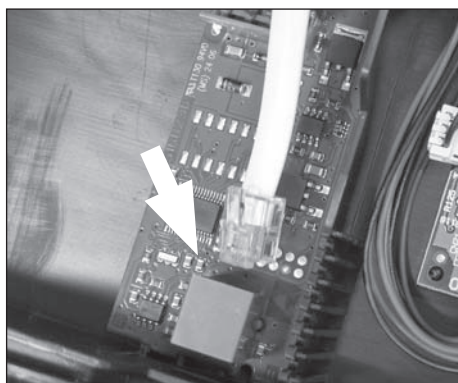
11



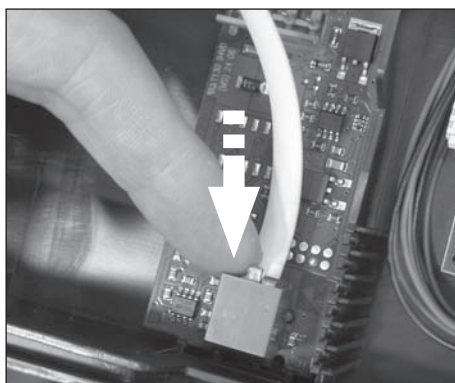
12



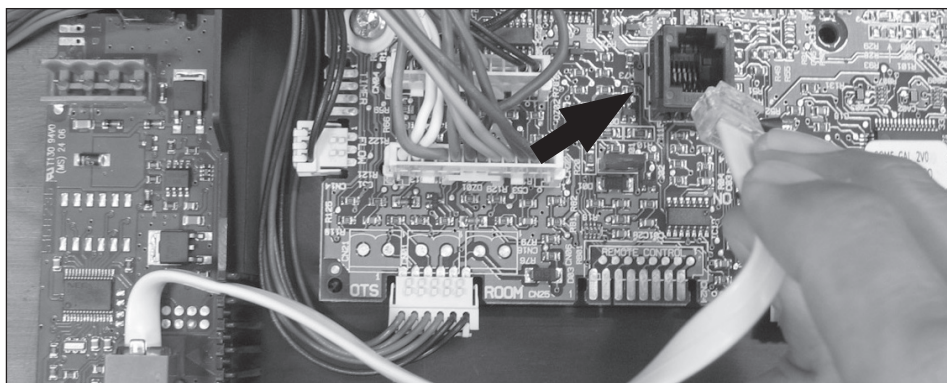
13



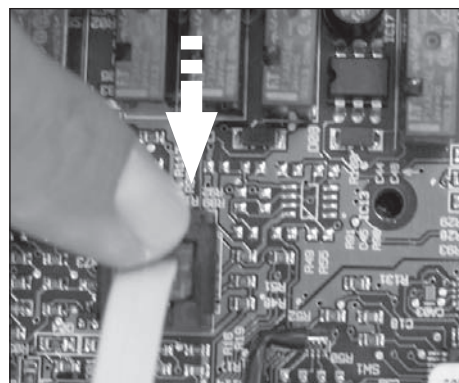
14



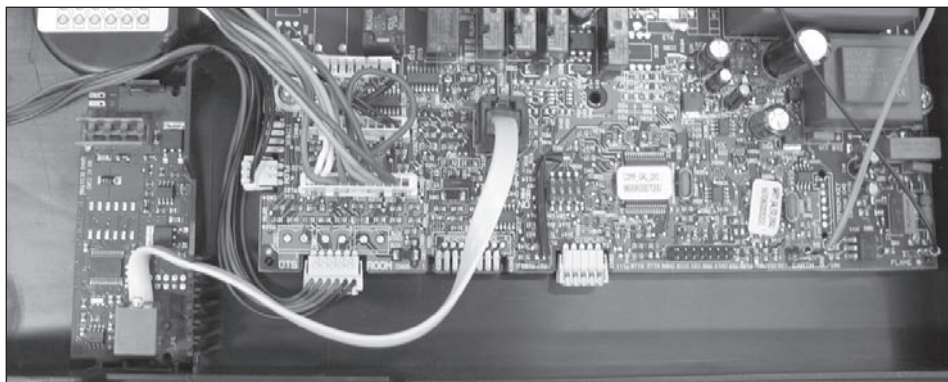
15



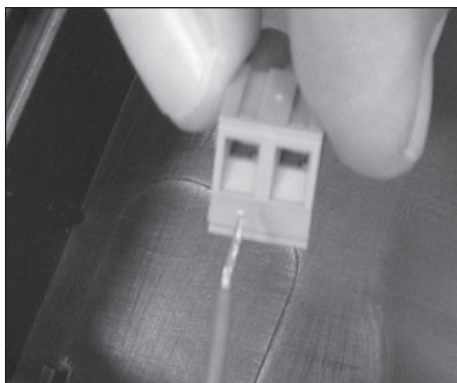
16



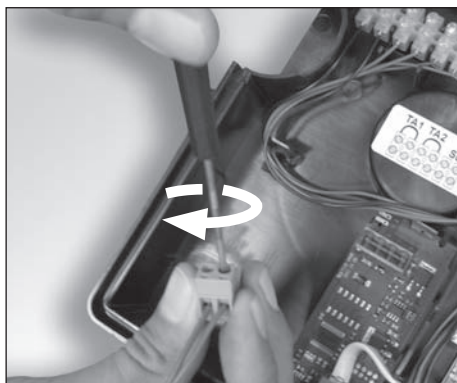
17



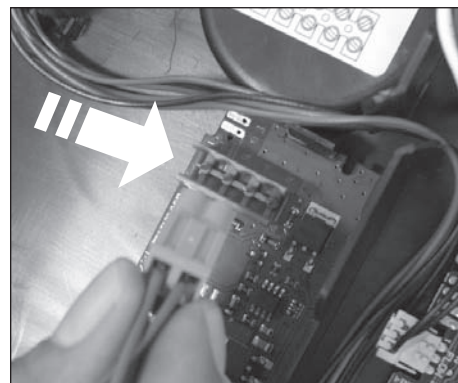
18



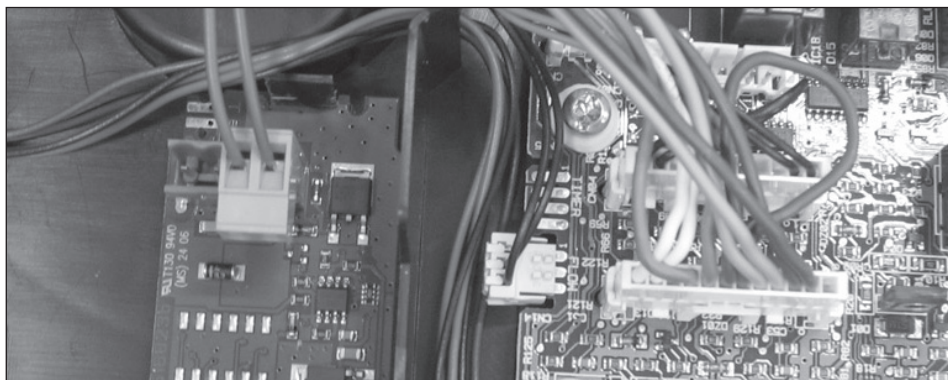
19



20



21



Linea collegamento periferiche:

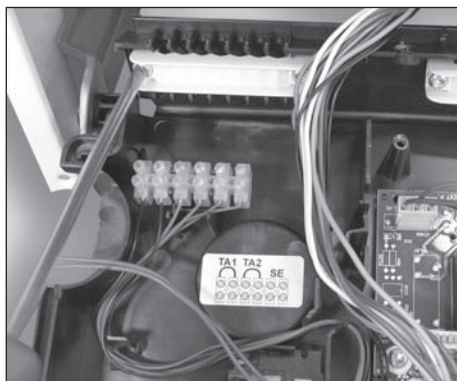
Line connection peripheral:

Ligne liaison périphériques:

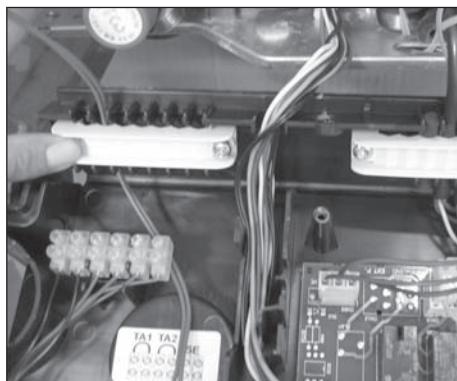
Periférico de conexión de línea:

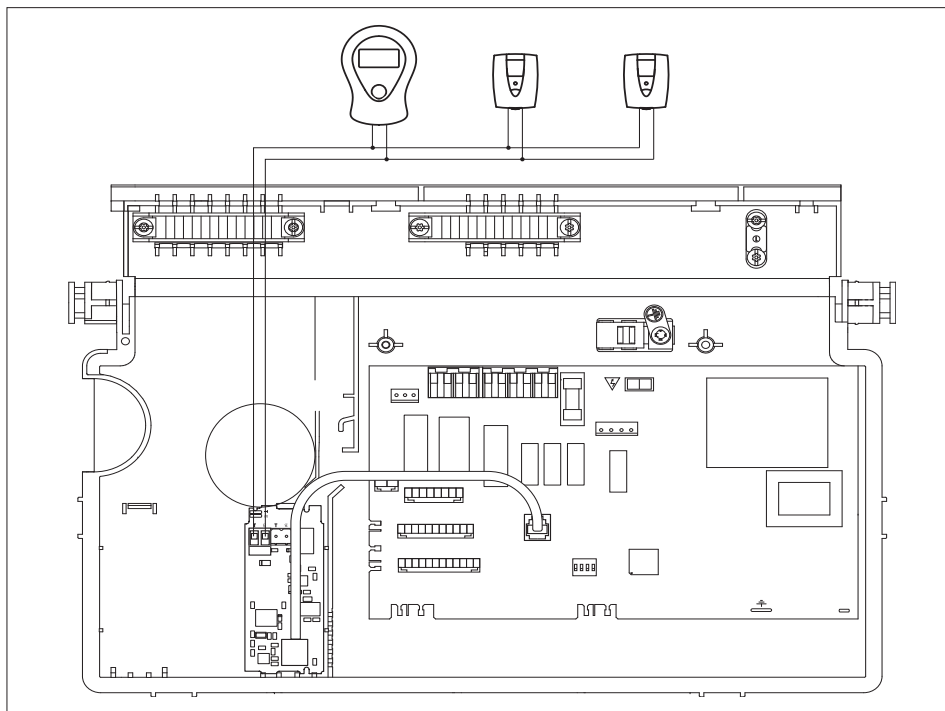
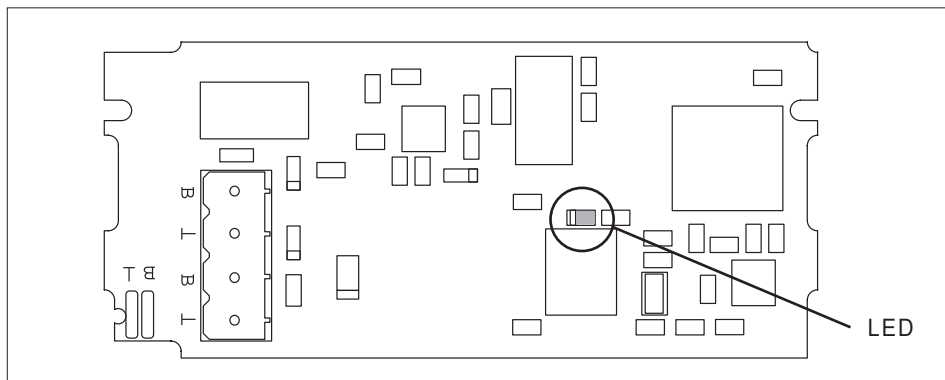
- \varnothing min 0,50 mm²
- L max 50 mt

22



23





LED:
 spento = problema comunicazione
 con scheda madre
 acceso = problema comunicazione
 con periferiche
 lampeggiante = funzionamento oK

LED:
 out = problem communication
 with PCB
 turned on = problem communication
 with peripheral
 flashing = operation OK

LED:
 éteint = problème communication
 avec des PCB
 allumé = problème communication
 avec des périphériques
 clignotant = fonctionnement OK

LED:
 Apagado = Problema comunicación
 con PCB
 Encendido = Problema comunicación
 con periféricos
 Luz intermitente = Funcionamiento OK



ATTENZIONE
 dispositivo sensibile all'elettrostaticità
 maneggiare con cura

ATTENTION
 observe precautions for handling
 Electrostatic sensitive devices

ATTENTION
 observez les précautions pour manipu-
 ler les dispositifs sensibles électrosta-
 tiques

ATTENTION
 observe las precauciones para manejar
 los dispositivos sensibles electrostáti-
 cos

DATI TECNICI / TECHNICAL DATA / DONNÉES TECHNIQUES / DATOS TÉCNICOS	
alimentazione elettrica / power supply alimentation d'énergie / fuente de energía	24VDC and 5VDC
assorbimento elettrico / power consumption absorption électrique / consumo de energía	max. < 2W
temperatura ambiente di utilizzo / operating temperature température ambient de j'utilise / temperatura ambient de yo utiliza	0 ÷ 70°C
Temperatura di stoccaggio/ Storage temperature/ Plage de température de stockage/ Temperatura de almacenamiento	-20 ÷ 70°C
alimentazione Bus / Bus supply Bus alimentation / alimentación Bus	70mA
lunghezza e sezione cavo Bus / Bus cable – length, cross section longueur et sezione creux Bus / longitud y sez hueco Bús	max. 50m, min. 0.5mm²
classe di isolamento / Insulation class classe d'isolement / clase d'isolement	III (EN 60730)
grado di protezione / degree of protection degré de protection / grado de protección	IP00 (EN 60529)
Conformità/ Conformity	CE LVD 2006/95/EEC
Interferenze elettromagnetiche/ Electromagnetic interferences/ Interference electromagnetic/ Electromagnético interferences	EN 60730-1
Emissioni elettromagnetiche/ Electromagnetic emission Emission electromagnetic/ Electromagnético emisión	EN 60730-1
Conformità standard/ Standard compliance Standard de conformité/ Estandard de conformidad	EN 60730-1